


livio^{AI}

Reimagining what a
hearing aid can do





Redefining what a hearing aid can do

We've reinvented the hearing aid with Livio AI, the world's first Healthable hearing aid with artificial intelligence and embedded sensors.

Livio AI addresses the deep connection between hearing health and overall health, empowering you with life-changing features and sound quality that, until now, was never possible in a hearing aid.

Award-winning technology

Livio AI is the next step in our continuous effort to give you the best hearing health solutions with the most advanced technologies.

livio^{AI}



The hearing aid reinvented

Livio AI is not only our best sounding hearing aid ever, it's the world's first hearing aid that monitors brain and body activity and provides convenient features that can simplify your life.

Built-in Artificial Intelligence

Livio AI gives you life-changing features with powerful artificial intelligence in every device.

The Most Complete Line of Rechargeable Hearing Aids

The world's first 2.4 GHz custom-molded rechargeable hearing aids give you discreet, comfortable and convenient options.



livio^{AI}

Thanks to advanced technology we call Hearing Reality, Livio AI is designed to be effective in the noisiest environments. In fact, a recent independent study gave Livio AI hearing aids the top rating compared to other manufacturers' premium devices for reducing background noise in noisy listening environments.¹ And our Mask Mode feature helps make it easier to hear people who are wearing face masks.

Hear speech comfortably even in busy settings while unwanted noise is suppressed.

No buzzing, no whistling, just comfortable, feedback-free listening all day.

Get superior sound quality, clarity, more natural hearing and effortless transitions.

Stream crisp, clear phone calls and experience music the way it was meant to be heard.

Connect hearing aids via Bluetooth® with accessories and select smartphones.*

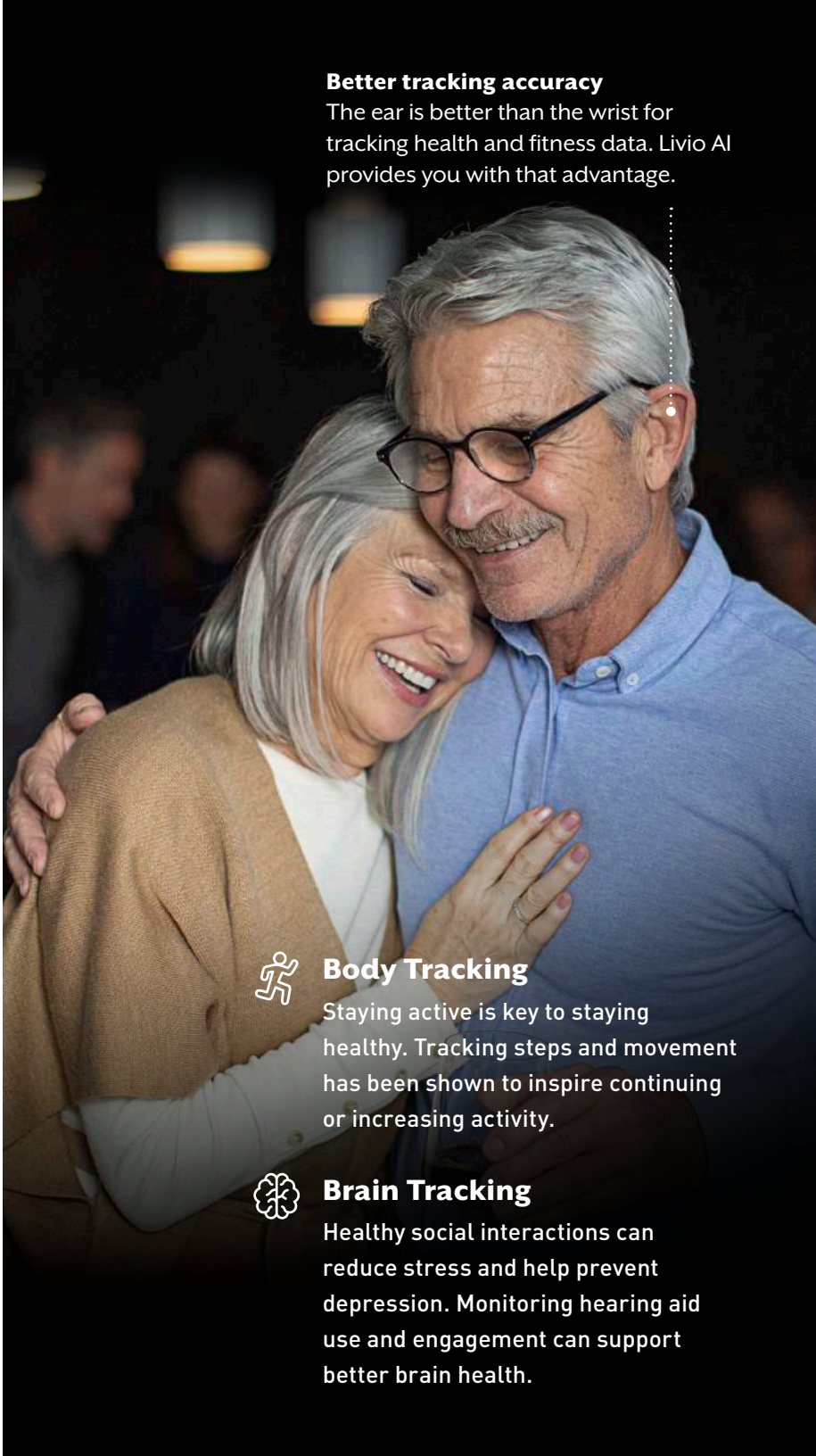


Preserve peace and quiet while important sounds like speech are amplified.

*Remote Microphone + is required for certain smartphones.

Healthy hearing means a healthier you

A growing body of evidence points to a connection between hearing health and overall health. People who treat their hearing loss not only hear better, but may lower their risk for serious health issues such as cognitive decline and dementia.²



Better tracking accuracy

The ear is better than the wrist for tracking health and fitness data. Livio AI provides you with that advantage.



Body Tracking

Staying active is key to staying healthy. Tracking steps and movement has been shown to inspire continuing or increasing activity.



Brain Tracking

Healthy social interactions can reduce stress and help prevent depression. Monitoring hearing aid use and engagement can support better brain health.

Custom.
Convenient.
Comfortable.

Meet the world's first custom rechargeable hearing aids. Custom means the hearing aid is custom molded to fit your unique ear canal comfortably and securely. And they won't get tangled or pulled off when wearing or removing face masks. Multiple color options allow you to be discreet or show off your new in-ear device.



Our new charger fits all custom hearing aids and provides up to 24 hours of power in a single charge.

thrive



Easy personalized control

The Thrive Hearing Control app works seamlessly with Livio AI to give you complete control of your hearing aids. Change settings easily, quickly adjust volume, create customized memories and stream music or phone calls with the touch of a button.

And that's just the beginning

The Thrive Hearing Control app delivers many powerful features that are easy to use and will help you manage your health and access useful information.



Simplify + thrive

No other hearing aid puts powerful, easy-to-use information features at your fingertips like Livio AI.



Mask Mode

This custom memory boosts certain frequencies to help you better hear people who are wearing face masks.*



Thrive Assistant

Use voice commands to get quick answers to questions, set reminders and control your hearing aids.*



Live Sessions

Get adjustments from your hearing professional wherever you are via video chat.



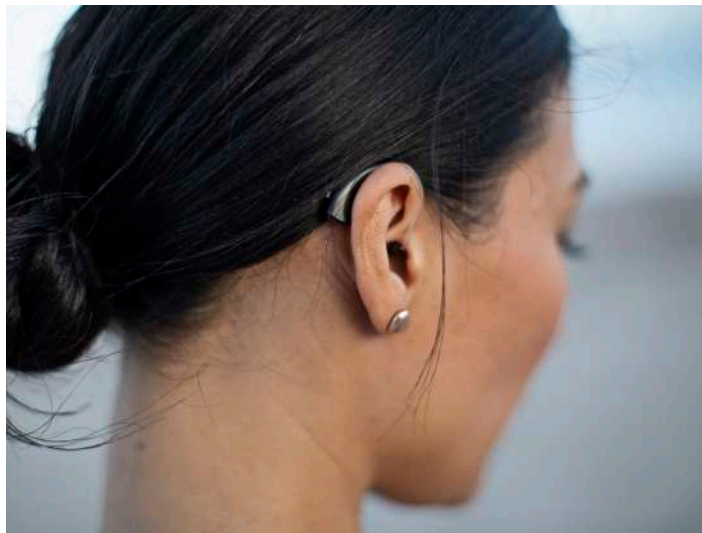
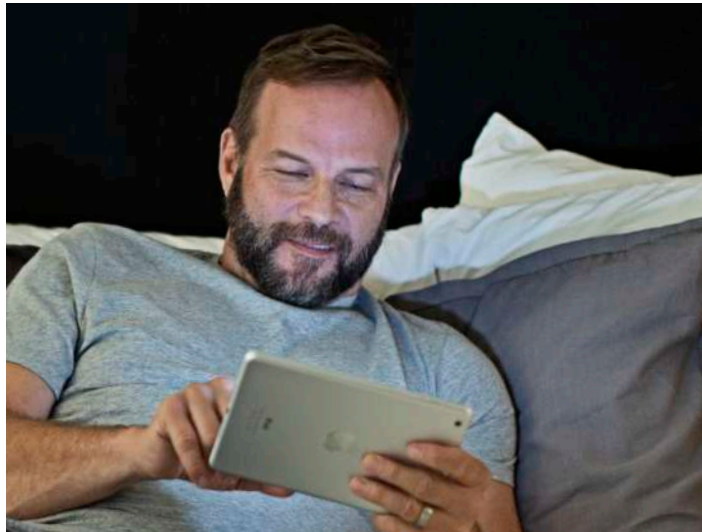
Find My Phone

Using Thrive Assistant and your hearing aids, you can locate a lost or misplaced phone by having it ring.*



Auto On/Off

Livio AI detects when you put your hearing aids in and take them out saving battery life.

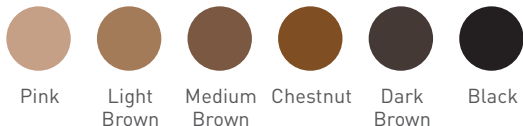


*Feature available on select technology levels

AI-powered hearing solutions for every need

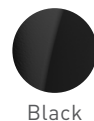
Talk to your hearing professional about your budget, your lifestyle and how active you are to help find the hearing aid that's right for you. And if you have single-sided hearing loss, we have solutions to help you.

..... In-ear Solutions

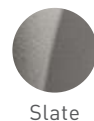


For optimal sound quality and universal connectivity without health-tracking sensors, try Livio or Picasso hearing aids.

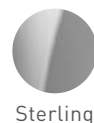
..... Over-the-ear Solutions



Black



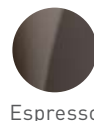
Slate



Sterling



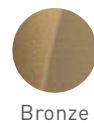
Bright White with Sterling



Espresso



Champagne



Bronze



Reconnect with what matters most

Sleek, wireless accessories stream the sounds you love directly to your Livio AI hearing aids. Enjoy your favorite music, TV shows and phone calls with excellent sound quality.

1. Remote Microphone +

Enables easy audio streaming and one-on-one conversations in noisy environments.

2. Mini Remote Microphone

Enjoy one-on-one conversations in noisy environments by clipping it to your conversation partner's clothing.

3. TV Streamer

Easily stream audio from your TV or other electronic audio source directly to your hearing aids.

4. Remote

Easily control memory and volume, mute your hearing aids and turn other special features on and off.

5. Table Microphone

Make group settings easy with eight built-in microphones that stream the primary speaker's voice to your hearing aids.



livioEdge^{AI}



Give yourself an edge

Livio Edge AI puts the power of artificial intelligence at your fingertips, giving you never-before-possible sound performance in the most challenging listening environments.



Game-changing Sound with Edge Mode

Livio Edge AI takes our industry-leading sound performance to new heights, providing you with instantaneous adjustments whenever and wherever you need them.

With just a tap, the AI technology helps improve speech understanding in the most difficult listening situations — including when people are wearing face masks or social distancing.

To learn more, ask your hearing professional about Livio Edge AI.

The Starkey logo, Livio, Livio logo, Healthable, Hearing Reality, Picasso, Thrive and Thrive logo are registered trademarks of Starkey Laboratories, Inc.

Apple, the Apple logo, iPhone, iPad, iPod touch, App Store and Siri are trademarks of Apple, Inc., registered in the U.S. and other countries.

Google Play is a trademark of Google LLC.

The Bluetooth® word mark and logos are registered trademarks owned by Bluetooth SIG, Inc. and any use of such marks by Starkey is under license.

SOURCES

¹ FORCE Technology, Senselab. [2018, November]. Benchmark evaluation of spatial noise management in hearing aids. FORCE Technology Venlighedsvej 4 2970 Hørsholm, Denmark.

² Livingston, Gill., et al. [2020, August]. Dementia prevention, intervention, and care: 2020 report of the Lancet Commission. *The Lancet*, 396(10248), 413–446. [https://doi.org/10.1016/50140-6736\(20\)30367-6](https://doi.org/10.1016/50140-6736(20)30367-6)

The app may have slight differences depending on your phone.



www.Starkey.com

Global Headquarters
6700 Washington Ave. S.
Eden Prairie, MN 55344
1.800.328.8602